



THE ROYAL
COLLEGE OF
SURGEONS
OF EDINBURGH

The Faculty of Pre Hospital Care

FACULTY OF PRE HOSPITAL CARE STRATEGY 2022

Output of the FPHC Executive
Committee Strategy Day
Thursday 28th April 2022
RCSED offices Birmingham

Executive Committee Attendees at Strategy Day Meeting



**THE ROYAL
COLLEGE OF
SURGEONS
OF EDINBURGH**

The Faculty of Pre Hospital Care

Office Bearers



Dr Pam Hardy
Chair



Dr Andy Smith
Honorary Secretary



Dr Peter Holden
Treasurer



Mr Chris Shaw
Vice Chair

Members



Prof Myles Gibson
Patron



Prof Sir Keith Porter
Patron



Dr David Bruce
Training & Standards
Committee Chair &
International Developments



Dr Jon Birks
Examinations
Committee Chair



Prof David Lockey
Past Chair &
Gibson Chair



Mr Andy Thurgood
Clinical Standards
Committee Chair



Mr Andy Smith
Elected Paramedic
Representative



Dr Caroline Leech
Elected Doctor
Representative



Mr Gordon Ingram
Regional Advisory
Group Chair



Dr Jonathan Abeles
Student & Junior
Trainee Group
Chair



Mrs Beth Stevenson
Faculty Manager



Ms Shannen Joyce
Membership, Comms &
Events Senior
Administrator



Ms Neri Narkute
FPHC Senior
Administrator

Unable to Attend



Dr Andy Pountney
Vice Chair



Dr Jon Bailey
PHEMTA Representative



Mr Adam Gent
Elected Non-Healthcare
Professional Representative

INTRODUCTION

The FPHC strategy is refreshed and updated each time there is a change of Chair, approximately every 3 years. This publication is a summary for all members of the updates and agreed strategy from 2022 and aims to give some clarity to what we do and demystify some of the structure.

The Faculty Strategy day plan was to focus on Clarity, demystifying some aspects of the Faculty structure.



What did we do?



What is outstanding?



What should we continue to do?



What should we drop?



What unplanned events occurred?



Where do we go next?



What are we not going to discuss today?

Faculty Overarching Themes

Multi-Professional

Wellbeing

Diversity

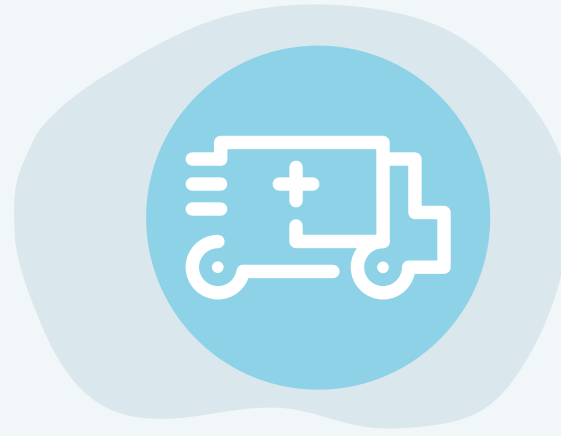
Philanthropy

Environmental

Inclusivity



REVIEW OF AIMS AND MISSION STATEMENT

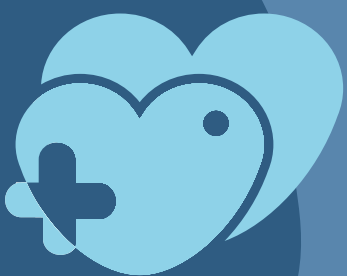


Pre-hospital care is a well-established branch of medicine, now practised by a broad range of practitioners from first aiders, paramedics, doctors, nurses, first responders, voluntary aid workers and remote medics including multi agency teams such as police, fire and armed forces.



As the face of pre-hospital emergency medicine changes, the Faculty's aim remains to be to set and maintain clinical standards for all practitioners in this evolving specialty

The Faculty aims to promote high standards of pre-hospital care through education, research and teaching.



Actions reviewed and what we plan to do

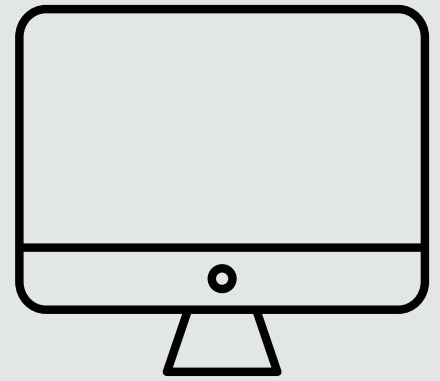


DEVISE AN FPHC MARKETING/COMMUNICATIONS STRATEGY

Plans are now in place to push our strategy forward.

INVESTIGATE THE USE OF PHEMNET AS A MEMBERSHIP BENEFIT

PHEMnet is now offered to all new members of the Faculty ✓



MEET WITH THE FACULTY OF REMOTE & RURAL MEDICINE TO UNDERSTAND THEIR ROLE, REMIT AND IDENTIFY POTENTIAL OVERLAPS/AREAS OF CO-OPERATION

Faculty relations are strong ✓

FPHC NEWSLETTER

Will continue to create Faculty Newsletter and have a regular feature in Surgeons News.

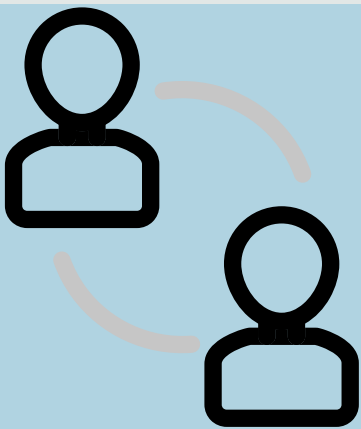


LOOK INTO POSSIBILITY OF DIGITAL PLATFORM WITH EDUCATIONAL CONTENT IN LIEU OF FPHC JOURNAL

Continue our webinar and blog posts. Plan to explore a online platform for members

APPLY FOR EPSRC GRANT (PHOTON)

This has now been completed ✓

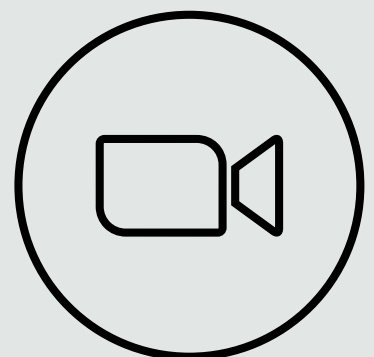


FINALISE TERMS OF REFERENCE FOR REGIONAL REPRESENTATIVES AND PUBLISH ON FPHC WEBSITE

Structure refreshed & new Chair Appointed ✓

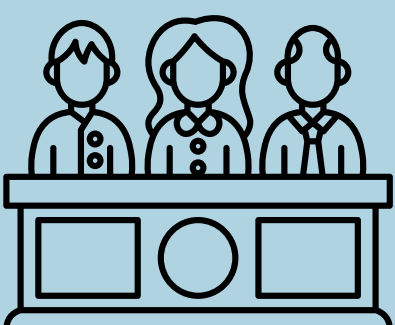
COMMUNICATE AGREEMENT ON USE OF A/V EQUIPMENT TO REGIONAL REPRESENTATIVES

Now have access to enhanced Zoom account ✓



PROPOSE PLAN ON HOW TO ENGAGE EFFECTIVELY WITH AND GET FEEDBACK FROM VARIOUS ORGANISATIONS WHO SIT ON THE FAB

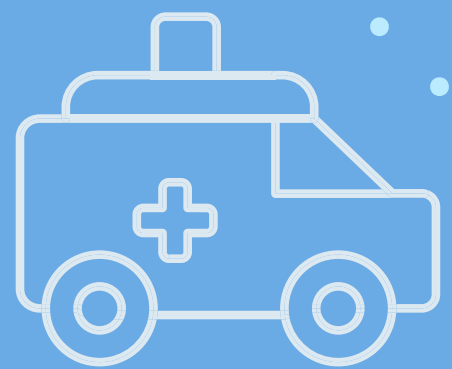
Work has started on refreshing representation on the board and simplifying the reporting process



Other Significant Faculty Achievements

Publication of the Psycho-Social Report: Valuing Staff, Valuing Patients: Report on The Psychosocial Care And Mental Health Programme

The Faculty are committed to the wellbeing of all our members and will now work on an action plan against the recommendations of the report

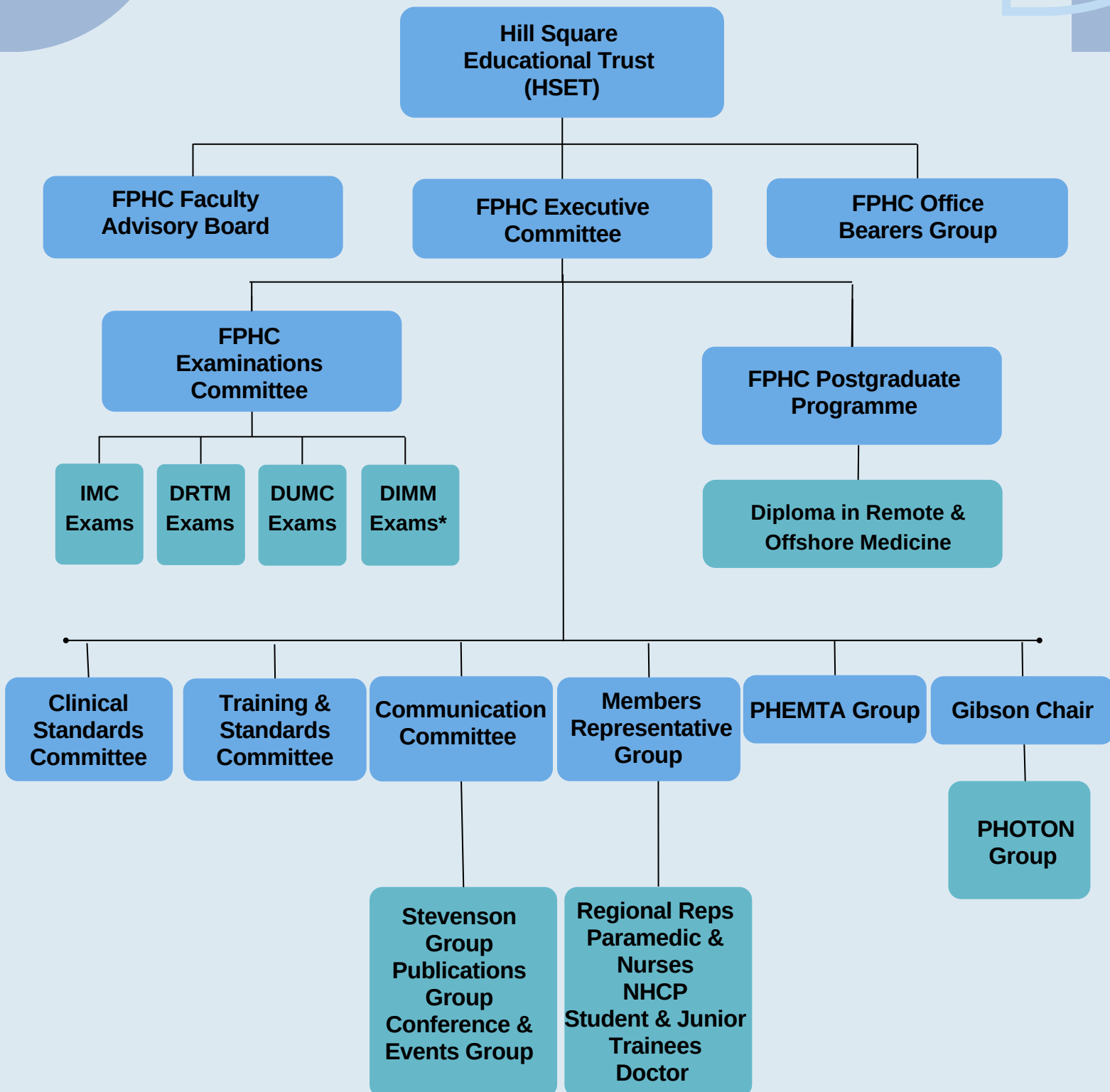


Faculty Medal

We commissioned the Faculty Medal to recognize exceptional individuals who have gone above and beyond to deliver fundamental and developmental change within the Faculty of Pre-hospital Care



The Faculty organizational structure has been updated.



*In development

Regional/Student & Trainee Group/Paramedic & Nurses/NHCP Groups

We have a new structure to incorporate the student & junior, nursing & paramedic and NHCP groups. Terms of Reference have been created and shared with the newly elected regional advisory group chair Gordon Ingram.

We have been listening to our members and this is what we aim to achieve with the changes:

- Be more efficient with a bigger number of people in the same pot delivering similar events
- Encourage all those expressing an interest in our electives to become members and deliver meaningful benefits
- Better share what is happening in each area – lots of activity and collaboration so look to our regional reps to better filter information through the FPHC office so we can share it and reach others via our social media accounts and events
- Support groups by providing speakers for webinars and offering career posting, and better links with voluntary sectors and volunteering at exams.
- Do our best to provide accessible CPD, as the biggest ask from our members from a recent survey



Frequently Asked Questions

We have a new area on our website to try to answer some of these, gathered from calls to our office and a recent survey. These are your top 10 and we are working our way through them – but please contact us if you can help answer from your own experience! Be great to have more members' contributions here or write a blog about your area of interest or experience of sitting one of the exams.

- How do I get to access free CPD and Online learning?
- What pathways are there for non-doctors in PHEM?
- How does one advance in advanced/specialist practice?
- Can you explain the FPHC standards and how that equates to everyday practice?
- How do I find out what is happening in my region?
- How do I become a rep on the FPHC committee?
- How can non-doctor practitioners advance in sports medicine?
- Is there a manual that I can purchase?
- What post nominal can I use from being a member?
- Is there a faculty approved portfolio that could be used as evidence?



Do you know our FPHC office Staff and what they do?



Beth Stevenson
Faculty Manager

- Strategic Matters
- Internal College Relationship Management
- with all College depts and faculties
- Finance & HSET Reporting
- Staff matters (including recruitment)
- T&S Committee lead
- Procurement matters
- AGM support
- Psychosocial Report office lead
- FPHC Office Bearer office lead
- Manual & Certificate Orders
- Commercial Providers & Sports Courses office lead
- IBTPHEM Support to Neri
- Clinical Governance office lead



Shannen Joyce
Membership, Comms & Events Sen Admin

- Managing Memberships
- Members
- Managing Membership benefits
- Internally with the RCSED
- Managing the Website & Social Media
- Managing marketing material
- Conference & Event Management
- Regional support
- Crowd Doctor office lead
- Manual Orders
- Faculty Accreditation office lead
- Faculty Advisory Board lead
- Executive Committee office lead
- Student and Junior trainee group support
- Faculty Groups' Support
- Organizing Faculty Webinars
- AGM support



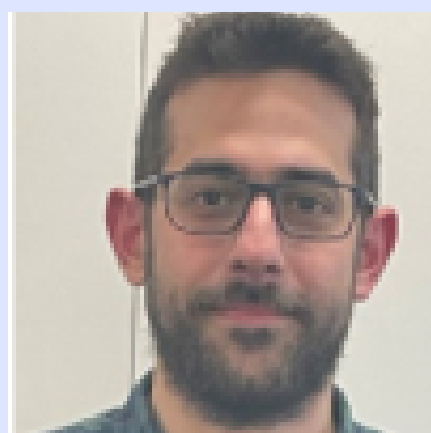
Neri Narkute
DipROM & IBTPHEM
Sen Admin

DipROM

- Managing the VLE
- Managing the Students
- Managing the Tutors
- Programme Committee
- Boards of Examiners
- Graduation Days
- Residential
- Managing module launches
- Managing DipROM Apps
- Managing IT issues
- DipROM Marketing

IBTPHEM

- Recruitment
- Training
- Curriculum
- Board
- Trainee database control
- National Induction Course
- Trainee Assessment Panel



Theo Theologidis
Exams Co-ordinator

- Existing Exams Support - IMC, DRTM, DUMC
- New Exams Support - DIMIM
- Student Exam Supporter Office Lead
- Candidate applications
- Examiner applications
- Relationships management
- Exam venue planning
- Exam finance management
- Assisting with exam marketing

Academic Activity in FPHC

With the support of Professor David Lockey, our Gibson Chair, the Clinical Standards Committee, the PHOTON Group and others, we are working on:

Reviewing and updating our consensus statements - currently:

- Psychosocial report
- Pelvic # management
- Vehicle Extrication
- AAGBI guidelines

With the Pre-hospital Research and Audit Network (PRANA) – collaborating on the establishment and delivery of a national clinical audit of pre-hospital critical care by the University of Southampton.

Making MSCs more affordable and accessible – with Accreditation of Prior Learning (APL) for successful exam candidates counting towards an MSc – currently in place for the Diploma in Urgent Medical Care (DUMC) / MSc in Urgent Medical Care with UCLan.

Collaboration to produce guidance for High Acuity Low Occurrence (HALO) interventions, such as thoracotomy with NASMED.

Updating the Foundation Material for Immediate Care Manual



Conferences

- RCSEd International conference in Chennai October 2022
- FPHC day at TraumaCare October 2022

Save the date!
FPHC Scientific
conference
16-17 March 2023
Edinburgh



Training and Standards Committee

The Training & Standards Committee have been working hard to ensure endorsed courses meet the required standard, needing some adaptations during the COVID pandemic.

The main functions and responsibilities of the Training & Standards Committee are to:

- Review and endorse where possible applications relating to pre-hospital care external courses;
- Maintain Faculty standards in the delivery of courses;
- Oversee the issuing of certificates for Faculty endorsed courses and manage commercial contracts.



We currently endorse 26 courses, with new course endorsement queries received regularly. Further details available on our website.

International developments

Some really exciting developments here including:

- FPHC session at the RCSEd conference in Chennai October 2022
- Parallel joint workshop between the FPHC, Sri Ramachandra Institute of Higher Education and Research (SRIHER) and the Faculty of Disaster Medicine – India and Nepal.
- Further ½ day session by SRIHER and the Faculty of Disaster Medicine, which the UK Speakers will attend and includes the launch of 1st Edition of an Emergency Services First Aid Drills Aide Memoire.
- Development of a pre-hospital trauma course to be delivered in India and beyond and continued work with the Primary Trauma Care Foundation.
- Endorsement of our first European Course (ESA).
- Supporting the creation of some training videos with Street Doctors, a charity supporting immediate care of casualties in Ukraine.



New Curriculum and Accreditation

The PHEM curriculum has been extensively reviewed by the curriculum committee, supported by FPHC and approved by the GMC with the new version going live in August 2022.

Given these changes, we will now review the FIMC certificate of eligibility and accreditation process. This has been an excellent piece of work by the curriculum committee, and we hope that we can reflect the changes reducing the paper burden of assessments in line with the new curriculum and simplify the parallel process and ensure that it is equitable for all.

FPHC Examinations



Faculty Examinations

One of the founding aims of the Faculty was to maintain standards of practice in pre-hospital care. One way the Faculty achieves this is through the provision of professional examinations, in partnership with the Royal College of Surgeons of Edinburgh, related to the clinical practice of pre-hospital care.

Exam enquiries can be directed to the FPHC Exam's Coordinator at:
fphc.exams@rcsed.ac.uk

Diploma in Major Incident Management (DIMIM)

This is an exam in development with work ongoing to add this to the FPHC and RCSEd suite of examinations.

Diploma in Immediate Medical Care (DIMC)

This examination is designed to test the knowledge, skills and behaviours of pre-hospital emergency care practitioners. There is a focus within this examination on timely recognition, diagnosis and management of conditions and situations in the pre-hospital environment rather than on the use of facilities for investigation and treatment that may be available predominantly within a hospital.

Fellowship in Immediate Medical Care (FIMC)

The Fellowship is the highest level of formal qualification available for pre-hospital practitioners. It has been extensively re-designed to meet the needs of the new medical sub-specialty of Pre-Hospital Emergency Medicine and the wider range of established and experienced pre-hospital practitioners.

Diploma in Retrieval and Transfer Medicine (DRTM)

This examination focuses mainly on the retrieval of patients from one health care facility to another. A knowledge and understanding of retrieval co-ordination and a variety of land and air transport platforms will also be expected.

Diploma in Urgent Medical Care (DUMC)

This examination for the Diploma in Urgent Medical Care is designed to test the knowledge, skills and behaviours of multi-disciplinary urgent medical care practitioners. There is a focus within this examination on timely recognition, diagnosis and management of conditions and situations in the urgent care environment



Remote and Offshore Medicine

Modules

Modules run in January, March, June and September.

Each module runs twice a year (either Jan/June or March/Sept)

Compulsory Modules

Induction Module (Free Module linked to C01)

C01 Health and Wellbeing of the Remote Worker

C02 Occupational Health in the Remote Setting

C03 Communication in the Clinical Consultation

C04 Telemedicine

C05 Dive Medicine

C06 Tropical Medicine

C07 Aeromedicine

C08 Trauma and Medical Emergencies

C09 Incident and Response Planning

C10 Evidence and Research in Remote Medicine

Optional Modules

O01 Tactical Medicine

O02 Expedition and Wilderness Medicine

O03 Learning and Teaching

O04 Humanitarian and Disaster Medicine



Next Intake: January 2023

Aimed At

Health professionals working in remote areas.

Eligibility

Must have recent work experience in remote/offshore environment, or intention to work in the ROM field.

Type of Study

Taught online via Virtual Learning Environment (VLE).

Fees*

Pay per Module	£587
Diploma Prepaid	£7,008
Certificate Prepaid	£3,504

Study Levels

Postgraduate Diploma

minimum of 3 years, max 5 years

Study 12 modules (10 Compulsory / 2 Optional)

Postgraduate Certificate

minimum of 18 months, max 3 years.

Study 6 modules (5 Compulsory / 1 Optional)

CPD

12 weeks per module, study alongside Dip/Cert students



MEMBERSHIP & COMMUNICATIONS- WHAT ABOUT YOU?!

We have a strong and growing membership with a high rate of retention and hope that you will feel that the strategy reflects our listening to the feedback that we have received both informally and through a number of surveys. We will continue to look at further membership benefits in response to members feedback and look at better communicating them with you – for example, did you know that membership fees contribute to the work of the Faculty in other countries? This has been flagged as one aspect of membership benefit that is not always obvious but is hopefully showcased to some extent in the information above.

We are keen to continue to grow and diversify our membership and make it accessible to all, and very keen to hear from members how they would best like us to communicate with them, if there are other benefits they would like to see, and how they may wish to be further involved.

We have a number of roles not only on our committees and groups but keen to hear from members who might help represent us for example at other conferences and meetings and also to update us on any events and activities they may be aware of through their own roles and social media links.

You may have seen the excellent reports on the website and social media recently from our elective students and we are very keen for others to contribute from any of their own experiences as well as sharing learning relevant to all by contributing to blogs, webinars, and regional events. We hear that members would like to see more information on careers in pre-hospital care and these are routes in which we can all share this.

The Stevenson group (key function is around communications) is currently inactive and this is one of greatest gaps and needs to be remedied. Look out for roles around this being advertised on the website.

Or is your forte education and publishing? We have been approached about creating an e-learning platform and we need to consider this further. Along with other publications including an advanced manual, fire service manual, DRTM-based resource, exam preparation courses and newsletters. Please remember, all the work that goes into almost all the roles with FPHC, is done on a voluntary basis. We need you!

Please do contact us and let us know what you would like to see and what you may wish to share. This is *your* membership and *your* Faculty!

www.fphc.rcsed.ac.uk

